



Workforce Alliance

*The Community Education Council
of Wayne & Pike Counties*

Annual Report 2018-2019

www.wpworkforce.org





A Year of Progress

Welcome to the 2018-2019 Annual Report. The Workforce Alliance team continues to build and offer educational opportunities that support lifelong learning. Our year included the additional office in Honesdale providing direct career services through the PA CareerLink® Affiliate in Wayne County. The Stourbridge Project Business Incubator Accelerator, expanded offerings around growth mindset, agriculture, technology and an assortment of other niche trainings. College internships continue to strengthen the business and education relationship, providing a direct pathway to employment opportunities. New programs and partnerships continue to expand the spectrum of workforce development efforts of Workforce Alliance.

Hard work and determination this year will now move our efforts into afterschool programs. Watch as we begin to SHINE and thank you for your continued support!

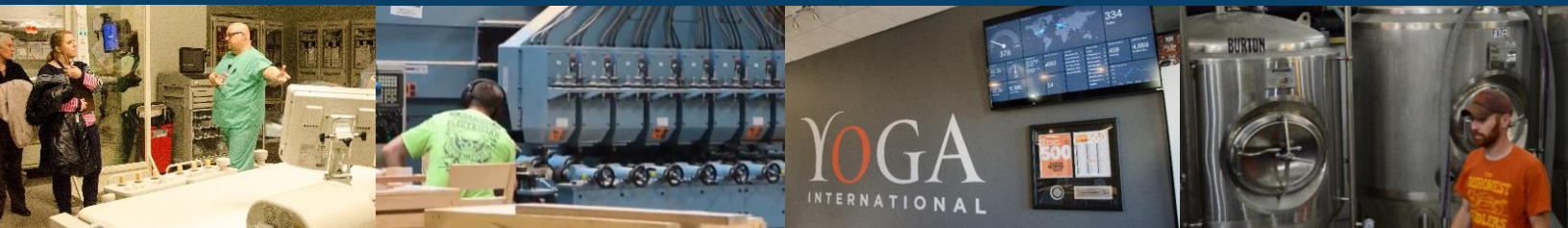
A handwritten signature in black ink, appearing to read 'Lucyann Vierling', with a stylized, flowing script.

A message from Lucyann Vierling, Executive Director

Teacher in the Workplace is a program designed to connect educators with businesses to learn about the workforce demands of the region. The program engages teachers through business site visits and discussions with key workforce and economic development experts.

85 educators this year gained a first-hand perspective on the knowledge and skills students need to succeed in post-secondary education and in the workforce. The program includes a strong focus on strengthening curriculum and building relationships through work-based learning opportunities for area students.

Teacher in the Workplace





Through the Wayne County SLIP Program, college students were able to enjoy all the benefits the local economy has to offer with paid internships in the professional field of their choice. Our local businesses reaped the rewards of hiring local talent and investing in the next generation.

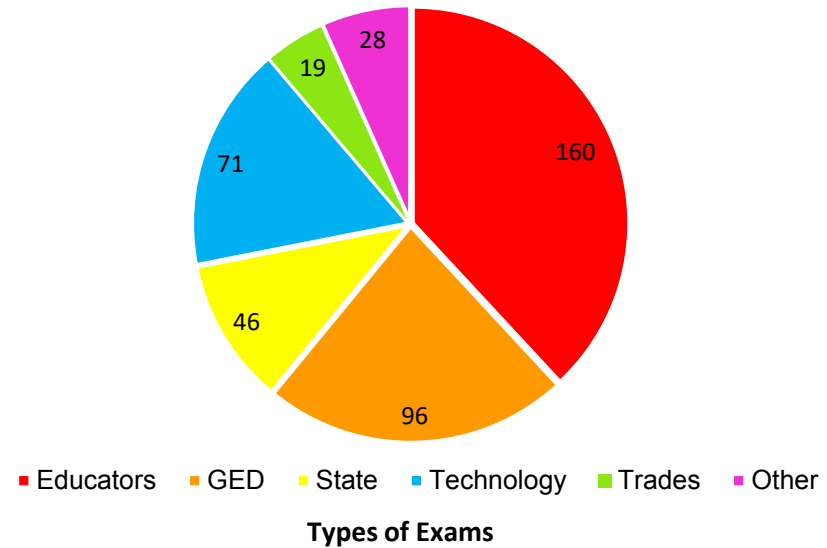
State Local Internship Program (SLIP)

25 students & businesses
participated

24 colleges and universities
represented

Thousands of certification tests are available at Workforce Alliance!

The tests we offer are from Pearson VUE®, Certiport® and the Educational Testing Service (ETS®) including the Praxis®, College Level Examination Program (CLEP®) and the High School Equivalency Test (HiSET®). We are a Pennsylvania Department of Education approved GED® testing site and offer certifications for many industries including those in Education, Information Technology, Food Safety, State, Medical and Business. Certifications serve an important role in upskilling the adult workforce and gives high school students an advantage by graduating with credentials.



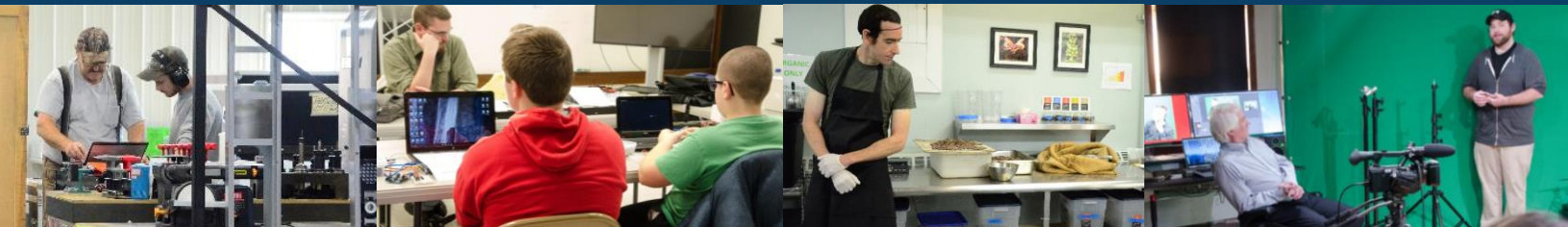
Certification Testing

99% customer satisfaction rating

420 tests delivered this year
a 14% increase from last year

The **PACTT Program** provides at-risk youth support and resources for education and careers. The goal is to reduce recidivism and ensure positive outcomes. As of April 2019, Workforce Alliance is the only community based affiliate for the PACTT Program in Northeastern and Central Pennsylvania providing services to court involved youth in Wayne and Pike Counties. Workforce Alliance provides program participants relevant, high quality academic and career technical education activities. These experiences help individuals prepare for their transition as they return to their home communities.

PA Academic and Career/Technical Training (PACTT)



Workforce Alliance is the PA CareerLink® Affiliate for Wayne County, a proud partner of the American Job Center® Network. We are part of the Pennsylvania Department of Labor & Industry's initiative to transform the landscape of how job seekers find sustaining jobs and how employers find skilled candidates.

CAREER ACADEMY delivers a comprehensive array of services that focus on assisting young people with barriers to employment.

JOB COACHING AND CAREER COUNSELING guides you through a thought-provoking and creative process that inspires you to maximize your personal and professional potential.

TRAINING SUBSIDIES are available to eligible individuals to provide skills training leading to certification in high demand, high growth and high wage job skills.

ON-THE-JOB TRAINING opportunities are available to businesses and employees.

INCUMBENT WORKER TRAINING upskill your existing workforce for advancement. Sliding scale reimbursement up to 90%.

Career Services

2457 individuals
served

87% one-on-one
coaching

487 youth
engaged

“Our experience with CareerLink has been great. We’ve gotten three people from them so far and recently we had a need for another one. We got Brandon aboard and he’s learning and the experience has just been wonderful. It’s nice to have a resource like CareerLink where when you need someone, you can tell them what you need and they get somebody for you.”

-Dan, Owner of Aldenville Log and Lumber



“I was down and out, I needed money real bad and I needed a job real bad and I came to the CareerLink office and you guys helped me out a lot. The staff was very, very helpful, very cooperative and I pretty much got a job doing what I like the same day. While I’m on the job training, I’m earning while learning.”

-Brandon, Aldenville Log and Lumber

Award Winning Programming at The Stourbridge Project

Recipient of the 2018 Pennsylvania Economic Developers Association's **Project of the Year Award**, the Stourbridge Project is the local Business Incubator which offers support for businesses at any stage of their development. Workforce Alliance develops educational programming with a focus on business, technology and developing the entrepreneurial mindset with the goal of building community through education. The success of our programs are due to a broad network of partners that span the local and regional community.

Ben Franklin Technology Partners

Johnson College

Keystone College's 3-D Design Center

NEPA Alliance

NEPA Tech

Northampton Community College's Follett Family Center
for Innovation and Entrepreneurship

Omnes Solutions (IoT)

Open Sun Power

Penn State Extension

Teachers and Students from four Area School Districts

The Chamber of the Northern Poconos

The Cooperage Project

The Entrepreneurial Learning Initiative

University of Scranton Small Business Development Center

U.S. Department of Agriculture

U.S. Small Business Administration

Wayne County Veteran's Affairs Office

Wayne Library Alliance

and an extensive cohort of local community experts and businesses.

The Stourbridge Project



Individual Workshops and Seminars:

3D Printing, Beginning to Intermediate levels, Keystone College
Arduino Programming Basics
Basic Electronics
Brew Pi
Build Your Own Solar Powered Charging Station, Open Sun Power
Business Planning for Startups by SCORE (Service Corp of Retired Executives)
CNC Carving Machine Class
Coding Camp
Computers for the Terrified, Equal Opportunity Centers, Inc.
Entrepreneurship for Educators, Northampton Community College
Developing Entrepreneurial Communities
Developing the Entrepreneurial Mind
First Steps to Starting your Business by Small Business Development Centers
Freedom to Focus, Workplace Efficiency
Future Innovations in 3D Printing, Keystone College
Glowforge Laser Cutter Class
Intro to 3D Design
Introduction to E-Commerce
Is Entrepreneurship for Me?
Meet Ben Franklin Technology Partners, Small Business Administration & the USDA
Social Media from the Top Digital Trainer
Start Your Own Home Based Business
Thinking Outside the Box with Electronics
Wayne County Robotics-Challenges in the FIRST Competition
What's New in IoT
Your Blog Your Brand

Penn State Scranton Leadership Essentials Series: Meeting Supervisory Responsibilities, Communicating Effectively, Resolving Conflicts, Coaching and Providing Feedback, Managing Time and Priorities, Supervising Projects, Clarifying Expectations and Observing Performance, Interviewing and Selecting Employees, Developing a Team, Leading Others

Pennsylvania Department of Labor & Industry Unemployment Compensation Series: Appeals/Hearings, Relief from Charges & Suitable Work, Separation Issues/Sides, Unemployment Compensation 101

Pennsylvania Higher Education Assistance Agency (PHEAA) Series: Award Letter Review, Financial Aid 101, How to Fill Out a FAFSA (Seminar), How to Fill Out a FAFSA (Hands On Filing), Searching for Scholarships

Individual Training Accounts with:

Jolie Academy
Lackawanna College
Northampton Community College
Penn State
Smith and Solomon-Commercial Driver Training
Trans America Tech Institute

On-the-Job Training:

Aldenville Log and Lumber
Church Street Chiropractic

Courses and Trainings

1267 people trained

123 programs delivered



The **SHINE After-School Program** is a new 21st Century Learning Grant program that harnesses a rich array of learning opportunities through the contributions of schools, community settings, science centers and museums delivering Science, Technology, Engineering and Mathematics (STEM) knowledge to youth. What makes the SHINE Program so exceptional is that teachers receive extensive professional development, a home visiting program connects families to necessary community health and social resources and a strong emphasis on parental involvement that helps parents access additional educational resources for High School equivalency diplomas and English language skills development. In partnership with community stakeholders, SHINE serves academically at-risk students and their families in the Wallenpaupack Area, Wayne Highlands, and Western Wayne school districts with five afterschool centers that will open in September 2019 in partnership with Lehigh Carbon Community College.

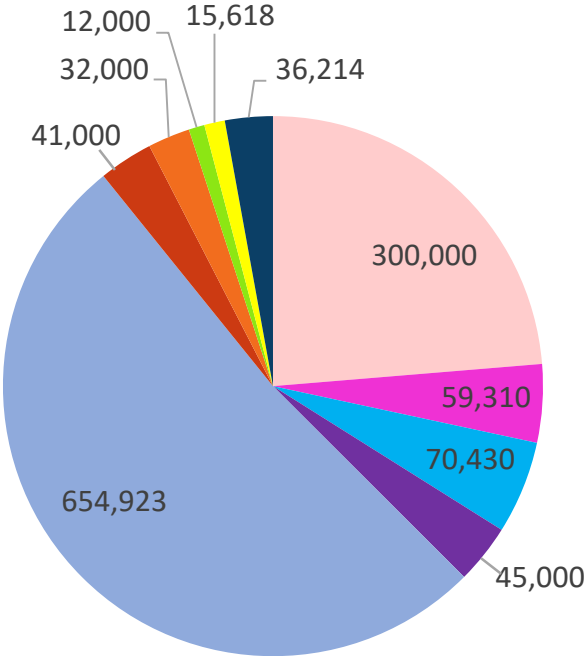
SHINE After School Program

\$2.3 million for 5 years of programming

Funded in full or in part with a grant provided by the Pennsylvania Department of Education.



The Pennsylvania Department of Education and the Pennsylvania Department of Labor & Industry through the Pocono Counties Workforce Development Board were the primary sources of available funding. Workforce Alliance supplements this base through additional revenue sources to maintain activities and broaden the scope of initiatives necessary to address lifelong learning.



Funding Sources

- | | |
|--|--|
| Workforce Innovation & Opportunity Act Grant | Local Share Account Grant |
| PA Department of Education Grant | Other Types of Income |
| State Local Internship Program Grant | PA Commission on Crime & Delinquency Grant |
| Business Education Partnership Grant | Events & Fundraising |
| Teacher in the Workplace Grant | US Department of Agriculture Grant |

Joe Adams, Wayne County Commissioner
Matt Barrett, Ed.D., Western Wayne School District
Kelly Carney, Leeward Construction
Cindy DeFebo, Pike County Workforce Development Agency
John Drake*, Penn State Scranton
Bethany Fine, Wayne Memorial Health Systems
Steve Guccini, Pike County Commissioner
Keith Gunuskey, Wallenpaupack Area School District
Joann Hudak, Ed.D.*, Education Consultant
Pete Ioppolo, Ed.D., Delaware Valley Middle School
Clayton LaCoe III, Ed.D., At Large, Wallenpaupack Area School District
Melissa Langone, Woodloch Pines/The Lodge at Woodloch
Gary Linton, Wayne Pike Adult Literacy Program
Anthony Manzione*, Blueprint Benefits Group/Manz1 Consulting
Marie McDonnell, At Large, Community Member
Timothy Morgan, Wayne Highlands School District

Jennifer Passenti, Lackawanna College, Lake Region Center
William Schaffer, Ph.D., Northampton Community College
Tracy Schwartz, Wayne Library Alliance
Marcy Swingle, The Honesdale National Bank
Kellyn Williams, Johnson College
Mary Beth Wood*, Wayne Economic Development Corporation

Board Emeritus:

Dan Card, Waste Management
Barb Linde, Linde Enterprises
William Schweighofer, The Honesdale National Bank

*Executive Board

Board of Directors





Top row, left to right:

Cheryl Duquette, Director of Program Development

Tessa Wright, Workforce Development Specialist

Kat Hait, Human Resources and Project Manager

Caryn Decker, Workforce Development Specialist

Donna Kiely, Director of Finance

Bottom row, left to right:

Melinda Judge, Workforce Development Assistant

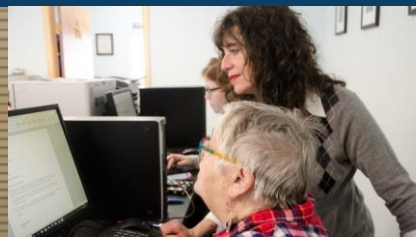
Lucyann Vierling, Executive Director

Helene Mancuso, Director of Workforce Development

Jess Wolk, Programs Coordinator



Workforce Alliance Staff





92 Main Avenue
Hawley, PA 18428